



# **Anthology**

## **Setting up a TouchScreen monitor**

Touchscreen functionality is a special add on module for use with the Cash Register, this works much like using the mouse to select a message button or double click to execute an action. A store can opt to have only one workstation using a Touchscreen monitor with the special cash register layout while the other workstations use that standard cash register layout. Note that only the cash register area has the specialized layout for the Touchscreen, while you can still touch the screen in other areas they have not been specially sized with larger buttons.

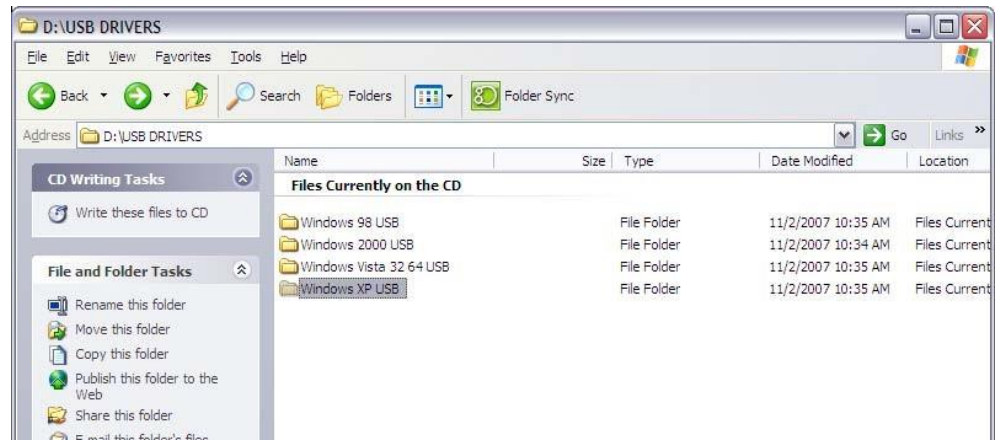
This function must be specially enabled by either a new install or by an Anthology technician logging into your system. To verify this function is enabled, go to Help | About Anthology | System Features should list "TouchScreen Conditional"

## **Setting up the Touchscreen Hardware**

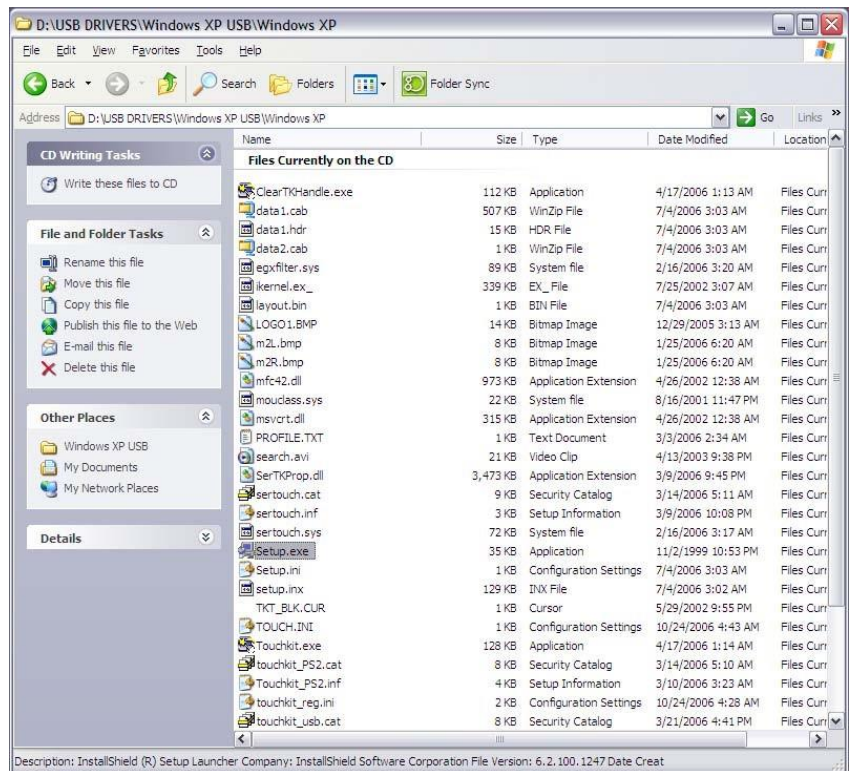
Most touchscreens come with the standard connectors like any typical monitor, a power cable and a data cable. This data cable could be the older standard analog connector (blue 9 pin) or newer digital connector (white dvi connector). Touchscreens also come with a 3<sup>rd</sup> cable that allows the 'touch' type data. Most often this 3<sup>rd</sup> cable is USB, in older models it may be a serial connection. With the computer turned off, connect all three cables appropriately, following any specific instructions that may have come packed with the hardware.

## **Installing the Touchscreen Driver**

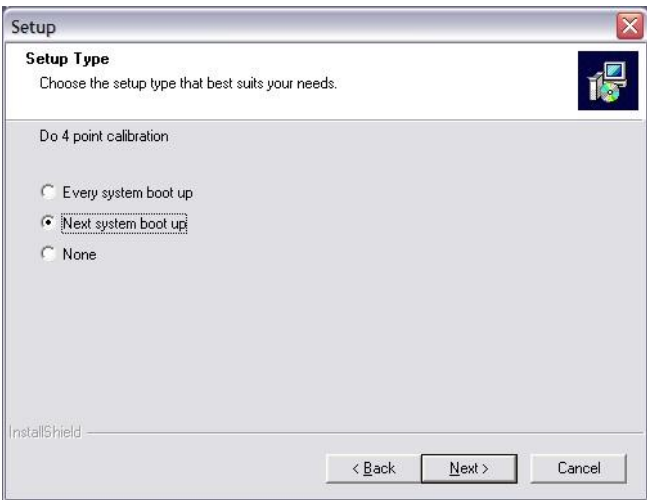
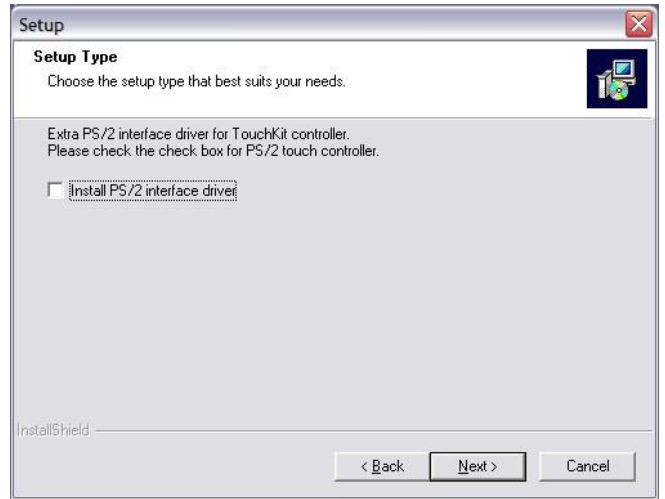
When booting up the computer you may be prompted about new hardware being found. If prompted for the location of the drive, insert the install CD into the machine and point the wizard to the drive where the CD is located or locate the downloaded file from the manufacturer's website.

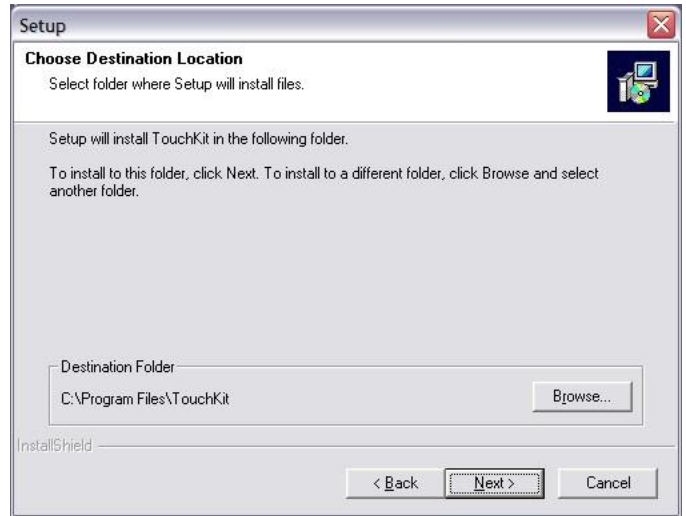
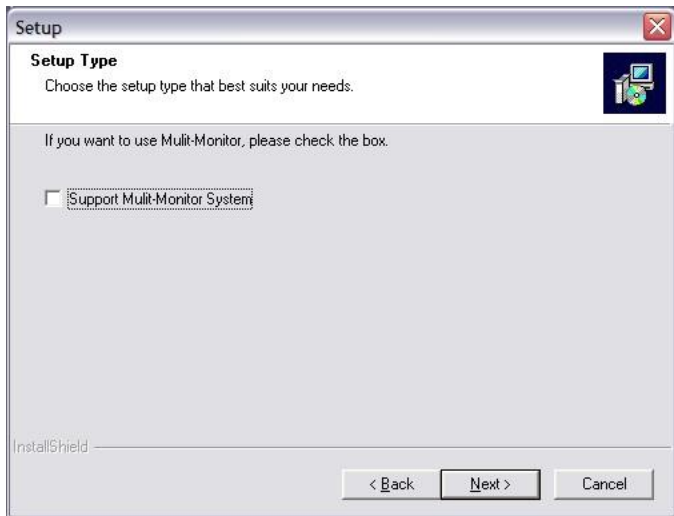


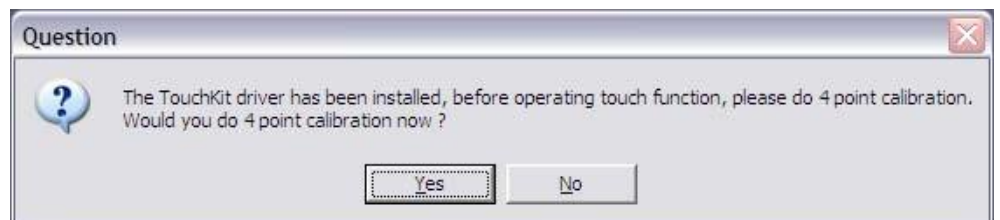
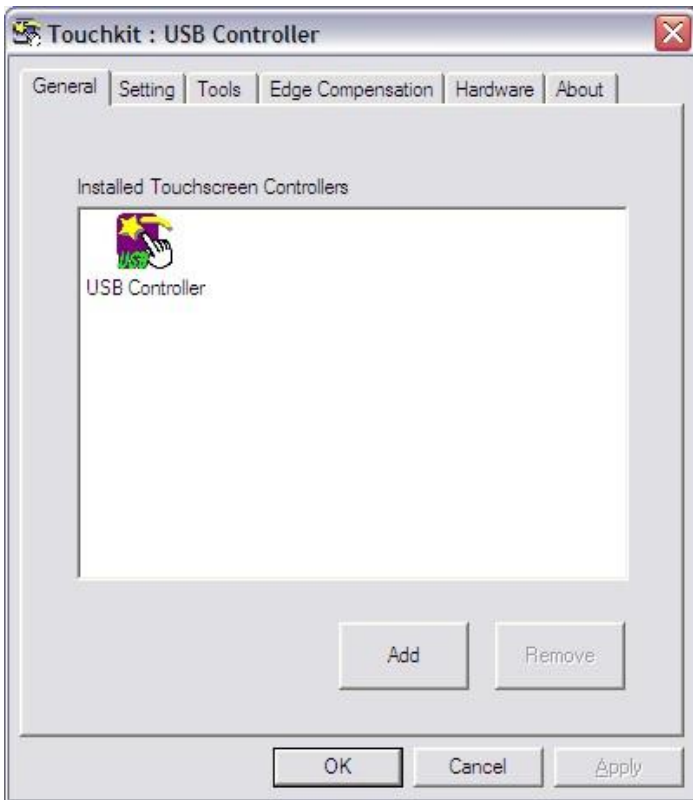
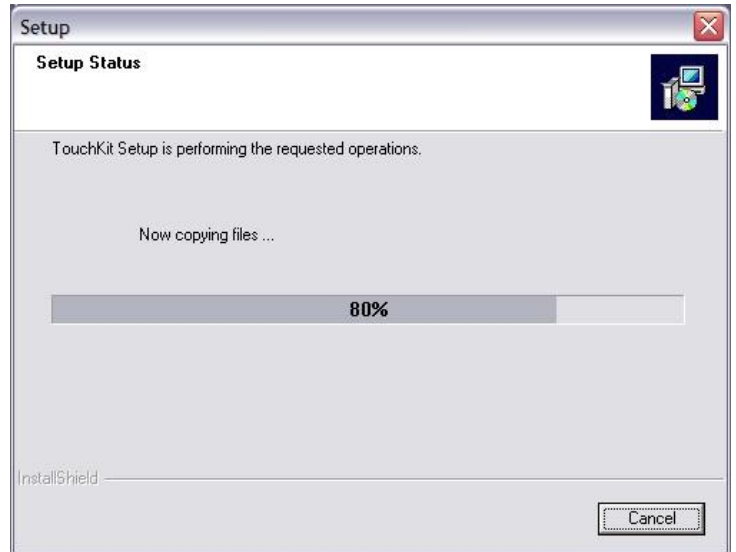
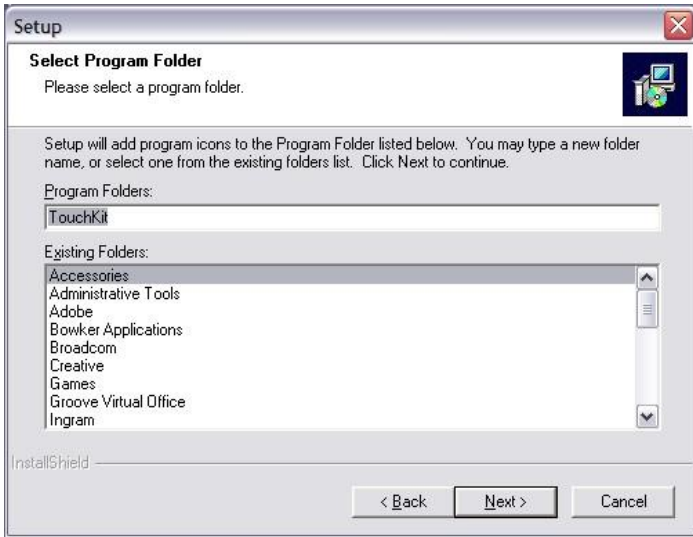
Once you've located the correct folder, either USB or Serial, along with the correct operating system, locate the SETUP.EXE and double-click



The Touchscreen Setup wizard will start. Follow the screenshots provided here to setup the Touchscreen driver.









The Touchscreen driver should now be completely installed. Please close all applications and restart the machine.

The first time the system boots up, a 'Calibration' process will run. Simply follow the online directions to calibrate. If you find you ever need to calibrate the screen again, simply locate the Touchscreen software in the Start menu under All Programs.

## Turning on the Touchscreen for the Workstation

Now that the hardware and driver are installed you need to turn on the special layout for the cash register. Go to Master Files | Stations | Details tab and check the box for "Use Touchscreen Cash Register". Save changes, close and reopen Visual Anthology. When you open the Cash Register at this station only you will see the specialized layout. You still have the Actions menu for any extra special functions, as well as all of the new on screen buttons to use. You can still use the mouse and keyboard commands, in addition to touching the monitor screen.

## Creating and using “POS Favorites”

Many stores using Touchscreens have Café's that sell the same items repeatedly such as S/M/L Coffee and various food items. The POS Favorites is a list of inventory items you select that will stay on the cash register screen so you can quickly and easily ring up those favorite frequent selling items.

To build a POS Favorite list go to Master Files | POS Favorites. Click F4 New and give the list a name. If you have multiple stations using the Touchscreen with different requirements or perhaps have different favorites for different times of the day you can define multiple lists.

Start selecting your existing inventory item from the ISBN/SKU field either by typing in the value and pressing ENTER or using the [...] button to bring up the inventory assistant.

ISBN / SKU	Title / Description	Sequence
FOODSAND	Sandwich	1

Note that the Sequence # is used to indicate what position the item will be in the list. You can rearrange the appearance of items by modifying the sequence #. Select the item in the grid and edit the value in the bottom portion of the screen, making sure to click the Enter Line button so the changes will be updated in the grid. Make sure no items have the same sequence number, each item needs it's own unique sequence number.

Once you have your list defined and saved, go to Master Files | Stations | Details tab and choose the desired list from the “POS Favorites” drop down box. Save changes, close and reopen the program.

When you next open the cash register on this machine you should see the POS Favorite items you added to the list.

## FREQUENTLY ASKED QUESTIONS

**What's the smiling egg about?**



This icon allows you to use the touchscreen monitor for both left and right ‘mouse clicks’

When the red highlight is on the left side of the image any touch to the screen will act like a left click. When the red highlight is on the right side of the screen a touch to the screen will act as a right click. To switch the mode just touch right on this icon. When in right click mode doing a touch to the screen will automatically switch the icon to the left click mode.

If you don't wish to see this icon, simply right click on the Touchscreen icon and choose Exit.



## **My TouchScreen is not working?**

Make sure the driver has been installed and that no cables have gotten pulled loose. If you've recently moved hardware around you may need to reinstall the hardware. Otherwise go to the Start Menu, All Programs, TouchKit and use the Configure Utility.